

---

# SPONSORSHIP PROPOSAL

AN EVENING OF HOPE

RIVER ROAST  
315 N LA SALLE ST, CHICAGO, IL

AN EVENING OF HOPE  
GALA



The Mike & Sandy Ernsdorff  
Childhood Cancer Foundation

OCTOBER 17, 2025  
RIVER ROAST, CHICAGO

TICKETS: [AnEveningOfHope.us](https://www.AnEveningOfHope.us)



## Contact

**Phone** 312-515-9490  
**Website** [www.AnEveningOfHope.us](https://www.AnEveningOfHope.us)  
**Email** [Michelle@CompassToCare.org](mailto:Michelle@CompassToCare.org)  
**Address** 6323 N Avondale Ave, Ste 250, Chicago, IL 60631

# About Us

One in five children diagnosed with cancer lives in poverty. While many of those children are living in poverty at the time of diagnosis, some cross into a poverty profile as a result of cancer-related financial toxicity (CRFT).

For these children, poverty is associated with higher rates of relapse and decreased overall survival. Researchers have found transportation to be one of the drivers of poorer survival rates.

## What can be done?

Compass to Care is proud to have three distinct nationwide non-emergency medical transportation (NEMT) solutions that directly and immediately remove the transportation barriers to cancer care for children with cancer who are living in poverty.

By supporting families in financial distress and removing the transportation barrier to access cancer treatment, Compass to Care is focused on preventing missed medical appointments and improving outcome for children living in poverty.

### Vision



Compass to Care will be known for its transformative travel efforts that reduce the disparities in access to childhood cancer treatment and clinical trials.



### Mission

Compass to Care addresses social determinants of health (SDOH) by focusing on transportation as a key barrier to healthcare access. By removing the financial and logistical obstacles related to travel, we ensure that children with cancer can get to life saving cancer treatment. Our support leads to improving access to care, reducing health disparities, and enhancing health equity.

# Life-Saving Impact

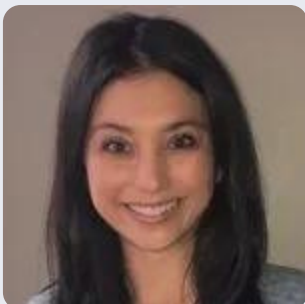


**1100 CHILDREN**  
**44K TRIPS**  
**6.5MM MILES**

## Meet Our Event Team



The Mike & Sandy Ernsdorff  
Childhood Cancer Foundation



**DANIELLE  
GOFFI**

Events@CompassToCare.org  
(847) 370-9862



**DANIELLE  
VILLARI SWETS**

Danielle@CompassToCare.org  
(708) 280-1982



**MICHELLE  
ERNSDORFF-MAY**

Michelle@CompassToCare.org  
(312) 515-9490

# About The Event



The Mike & Sandy Ernsdorff  
Childhood Cancer Foundation

Join us for an unforgettable evening dedicated to removing travel barriers for children in need of life-saving cancer treatment.

Set against the breathtaking backdrop of downtown Chicago and the Chicago River, this annual event features contemporary American tavern fare, a silent auction, live music, and inspiring stories of hope.

Every dollar raised will help provide children with the transportation they need to reach treatment and fight cancer. Don't miss this opportunity to make a difference



## Event Highlight

**FRIDAY, OCTOBER 17, 2025**

---

**7:00 - 11:00pm**

---

**River Roast  
315 N La Salle St, Chicago, IL**

---

**Food Stations. Drinks. Music.  
Silent Auction. Fund-A-Child.**

# Sponsor Benefits



Compass to Care's An Evening of Hope offers a strategic way to build corporate brand and to meet your corporate social responsibility by supporting children with cancer.

## BRANDING

As an Evening of Hope sponsor, you'll receive valuable brand exposure through prominent logo placement on event collateral. Depending on your sponsorship level, your logo will be featured across multiple promotional materials, ensuring visibility wherever the event is advertised.

## RECOGNITION

We understand the importance of recognizing our corporate sponsors for their generosity. Based on your sponsorship level, we will highlight your support through multiple channels throughout the year, ensuring you receive the acknowledgment you deserve.

## SOCIAL RESPONSIBILITY

Invite your employees and colleagues to witness your corporate social responsibility in action by using the tickets included with your sponsorship. Their attendance will allow them to see firsthand the impact your support has on children and families facing childhood cancer.

# Sponsorship Packages



The Mike & Sandy Ernsdorff  
Childhood Cancer Foundation



## Presenting

### BRANDING on...

Full-page Advertisement in the Program (5.5x8.5)

Invitation and Event Material As A Presenting Sponsor

Step-and-Repeat

Website Landing Pages

Newsletters

Email Campaigns

Print & Web Ads

Press Releases

### RECOGNITION...

On individual social media platforms

In another Compass to Care event as an event sponsor

### DINNER TICKETS...

20 tickets for you and your guests

**\$20,000**



## Life

### BRANDING on...

Full-page Advertisement in the Program (5.5x8.5)

Invitation and Event Material

Step-and-Repeat

Website Landing Pages

Newsletters

Email Campaigns

Print & Web Ads

Press Releases

### RECOGNITION...

On individual social media platforms

In another Compass to Care event as an event sponsor

### DINNER TICKETS...

10 tickets for you and your guests

**\$10,000**



## Journey

### BRANDING on...

Half-page Advertisement in the Program (5.5x4.25)

Event Material

Step-and-Repeat

Website Landing Pages

Newsletters

Email Campaigns

Print & Web Ads

### RECOGNITION...

On individual social media platforms

### DINNER TICKETS...

8 tickets for you and your guests

**\$5,000**



## Travel

### BRANDING on...

Quarter-page Advertisement in the Program (2.75x4.25)

Event Material

Website Landing Pages

Newsletters

Email Campaigns

### RECOGNITION...

On individual social media platforms

### DINNER TICKETS...

6 tickets for you and your guests

**\$2,500**

In addition to sponsor benefits, you will be helping raise awareness of a critical need in the pediatric oncology community and supporting children who need help as they travel in search of a cancer cure.

# Key 2025 Dates



The Mike & Sandy Ernsdorff  
Childhood Cancer Foundation

**1  
JUNE**

## Last Day To Secure Sponsorships

If you would like your information on our printed materials, your sponsorship commitment must be in by September 13.

**15  
SEPT**

## Last Day To Submit Ads

For your advertisement to be in our program book, ads must be submitted on or before October 11.

**3  
OCT**

## Submit Guest Names

To ensure we are prepared for your guests, please have your guest names submitted by November 4.

**17  
OCT**

## An Evening of Hope

Join us for a beautiful event focused on helping children with cancer. Cocktail attire is suggested.





The Mike & Sandy Ernsdorff  
Childhood Cancer Foundation

**Thank you!**  
**We would love to**  
**have your support!**

COMPLETE SPONSORSHIP INFORMATION ONLINE AT:  
[www.AnEveningOfHope.us](http://www.AnEveningOfHope.us)

## **Contact**

**Phone** 312-515-9490

**Website** [www.AnEveningOfHope.us](http://www.AnEveningOfHope.us)

**Email** [Michelle@CompassToCare.org](mailto:Michelle@CompassToCare.org)

**Address** 6323 N Avondale Ave, Ste 250, Chicago, IL 60631