



Dear Potential HONORING MOTHERS BREAKFAST BENEFIT Sponsor,

I am the founder of Compass to Care, The Mike & Sandy Ernsdorff Childhood Cancer Foundation. Our mission is to help children with cancer, whose families are facing financial hardship, access life-saving treatments. We achieve this by covering and coordinating all travel arrangements needed to get these children from their homes to the hospitals where they receive care.

This year, we are thrilled to celebrate 15 years of providing hope and critical support to children battling cancer. In honor of this milestone, we will be celebrating our anniversary during our HONORING MOTHERS BREAKFAST BENEFIT and we hope you will join us as a sponsor!

HONORING MOTHERS BREAKFAST BENEFIT Details:

- Date: Friday, May 9, 2025
- Time: 9:00-11:00 AM
- Location: Zia's Social, Chicago, IL

This special breakfast event will be one of inspiration, reflection, and purpose as we celebrate our journey, raise awareness, and continue to generate support for the children and families we serve.

I would be honored to have you join us as a sponsor of this meaningful event. Enclosed, you'll find details about sponsorship opportunities. Should you have any questions, feel free to contact me directly at (312) 515-9490 or Michelle@CompassToCare.org.

Your partnership would mean so much as we commemorate this milestone and ensure no child battling cancer faces barriers to treatment. Thank you for considering this opportunity to make a lasting impact.

With gratitude,

Michelle Ernsdorff-May, MBA
Founder & Childhood Cancer Survivor



SPONSORSHIP PROPOSAL

ZIA'S SOCIAL
6158 N NORTHWEST HWY, CHICAGO

Phone 312-515-9490
Website <https://www.CompassToCare.org/ChicagoBreakfast/>
Email Michelle@CompassToCare.org
Address 6323 N Avondale Ave, Suite 250
Chicago, IL 60631

About Us



One in five children diagnosed with cancer lives in poverty. While many of those children are living in poverty at the time of diagnosis, some cross into a poverty profile as a result of cancer-related financial toxicity (CRFT).

For these children, poverty is associated with higher rates of relapse and decreased overall survival. Researchers have found transportation to be one of the drivers of poorer survival rates.

What can be done?

Compass to Care is proud to have three distinct nationwide non-emergency medical transportation (NEMT) solutions that directly and immediately remove the transportation barriers to cancer care for children with cancer who are living in poverty.

By supporting families in financial distress and removing the transportation barrier to access cancer treatment, Compass to Care is focused on preventing missed medical appointments and improving outcome for children living in poverty.

Vision



Compass to Care will be known for its transformative travel efforts that reduce the disparities in access to childhood cancer treatment and clinical trials.



Mission

Compass to Care's mission is to ensure children battling cancer and facing poverty or financial challenges caused by their diagnosis can access life-saving cancer treatments and clinical trials through free non-emergency medical transportation (NEMT).

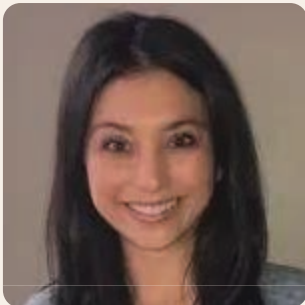
Life-Saving Impact

1100 CHILDREN
44K TRIPS
6.5MM MILES

Meet Our Event Team

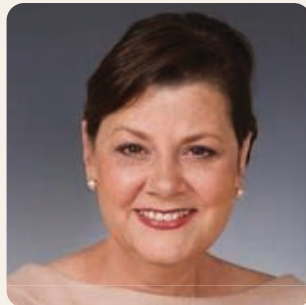


The Mike & Sandy Ernsdorff
Childhood Cancer Foundation



**DANIELLE
GOFFI**

Events@CompassToCare.org
(847) 370-9862



**DANIELLE
VILLARI SWETS**

Danielle@CompassToCare.org
(708) 280-1982



**MICHELLE
ERNSDORFF-MAY**

Michelle@CompassToCare.org
(312) 515-9490

About The Event

We're thrilled to invite you to the Honoring Mothers Breakfast Benefit in Park Ridge, a special event celebrating the incredible strength and love of mothers supporting children battling cancer.

Join us as we gather to reflect on the meaningful impact Compass to Care has made in the lives of families over the years and to honor the unwavering dedication of these remarkable women.

Thank you for being part of this heartfelt celebration. We can't wait to share this inspiring morning with you!



Event Highlight

FRIDAY, MAY 9, 2025

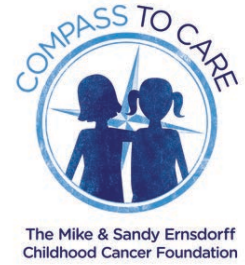
9:00 - 11:00 am

Zia's Social
6158 N Northwest Hwy, Chicago

EVENING AT A GLANCE

- Inspiring stories from our families
- Delicious food, drinks, & a champagne toast
- Fund a child

Sponsor Benefits



Compass to Care's HONORING MOTHERS BREAKFAST BENEFIT will be an inspiring morning to celebrate our journey, spread awareness, and continue raising funds to support the children and families we serve.

BRANDING

As a HONORING MOTHERS BREAKFAST BENEFIT Sponsor, our goal is to help you increase branding by putting your logo on all of our event collateral. Sponsors will see their logo everywhere we promote the event, based on their sponsorship level.

RECOGNITION

We know how important it is for Corporate Sponsors to be recognized for their generosity. To help you achieve this recognition, we will acknowledge your support in various ways throughout the year, based on sponsorship level.

SOCIAL RESPONSIBILITY

Give your employees and colleagues an opportunity to see your corporate social responsibility in action by inviting them to use the tickets included with your sponsorship. When they join us at the event, they can experience the impact you are making for kids and families affected by childhood cancer.

Sponsorship Packages



The Mike & Sandy Ernsdorff
Childhood Cancer Foundation

PRESENTING	PLATINUM	GOLD	SMALL BIZ SILVER	SMALL BIZ BRONZE
<p>BRANDING on... Named as Presenting Sponsor for promotion*</p> <p>Event Material</p> <p>Website Landing Pages</p> <p>Newsletters</p> <p>Email Campaigns</p> <p>Print & Web Ads</p> <p>Press Releases</p>	<p>BRANDING on... Event Material</p> <p>Website Landing Pages</p> <p>Newsletters</p> <p>Email Campaigns</p> <p>Print & Web Ads</p>	<p>BRANDING on... Event Material</p> <p>Website Landing Pages</p> <p>Newsletters</p> <p>Email Campaigns</p> <p>Print & Web Ads</p>	<p>BRANDING on... Event Material</p> <p>Website Landing Pages</p> <p>Newsletters</p> <p>Email Campaigns</p>	<p>BRANDING on... Event Material</p> <p>Website Landing Pages</p> <p>Newsletters</p> <p>Email Campaigns</p>
<p>RECOGNITION... On individual social media platforms</p>	<p>RECOGNITION... On individual social media platforms</p>	<p>RECOGNITION... On individual social media platforms</p>	<p>RECOGNITION... On individual social media platforms</p>	<p>RECOGNITION... On individual social media platforms</p>
<p>BREAKFAST TICKETS... 20 tickets for you and your guests</p>	<p>BREAKFAST TICKETS... 10 tickets for you and your guests</p>	<p>BREAKFAST TICKETS... 8 tickets for you and your guests</p>	<p>BREAKFAST TICKETS... 6 tickets for you and your guests</p>	<p>BREAKFAST TICKETS... 4 tickets for you and your guests</p>
\$10,000	\$5,000	\$2,500	\$1,000	\$500

POP UP SHOP SPONSORS

We are excited to host a Pop Up Shop again this year. All sponsors who want to showcase and sell their products will be promoted on our event materials, website landing pages, newsletter and email campaigns. We will also provide recognition on social media platforms and provide 2 tickets to the event. Pop Up Shop Sponsors are ask to donate back a portion of the proceeds earned at the event.

\$250+ % of Proceeds

In addition to sponsor benefits, you will be helping raise awareness of a critical need in the pediatric oncology community and supporting children who need help as they travel in search of a cancer cure.

Key Dates



The Mike & Sandy Ernsdorff
Childhood Cancer Foundation

**21
MAR**

Last Day To Secure Sponsorships

If you would like your information on our printed materials, your sponsorship commitment must be in by March 21.

**23
APR**

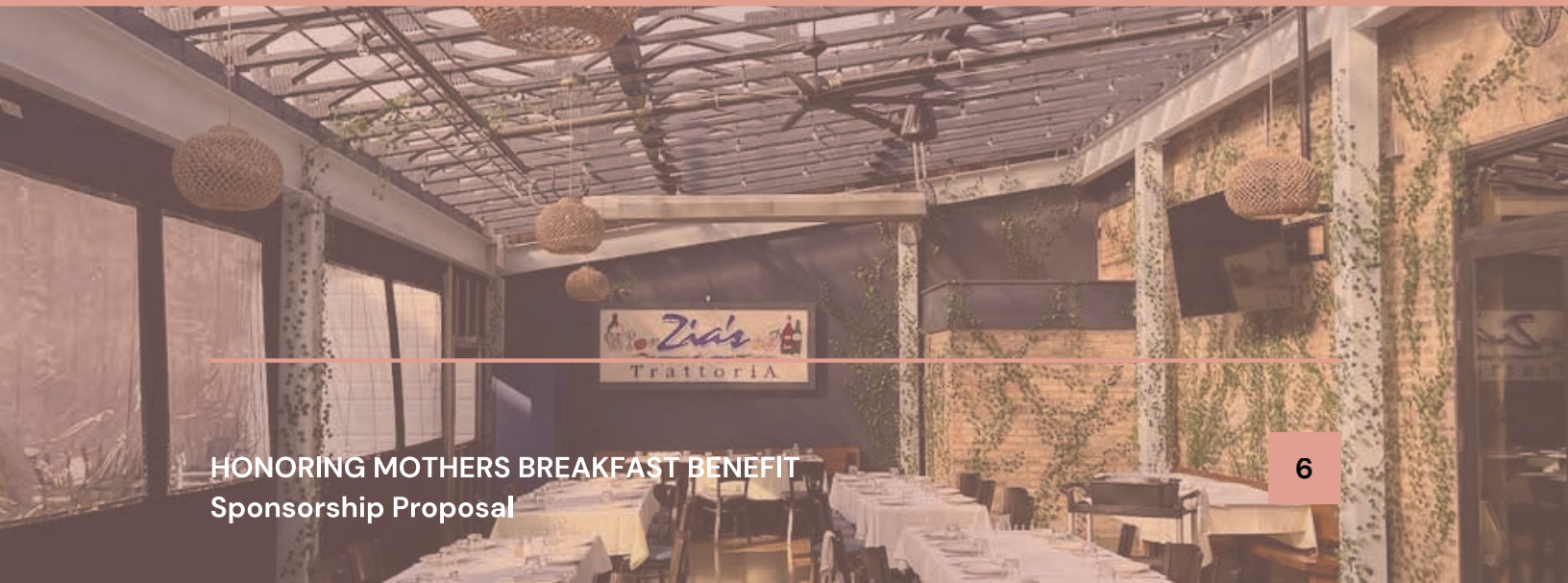
Submit Guest Names

To ensure we are prepared for your guests, please have your guest names submitted by April 23.

**9
MAY**

HONORING MOTHERS BREAKFAST BENEFIT

Join us for a beautiful event focused on helping children with cancer.





The Mike & Sandy Ernsdorff
Childhood Cancer Foundation

Thank you!
We would love to
have your support!

COMPLETE SPONSORSHIP INFORMATION ONLINE AT:
www.CompassToCare.org/HMBB-Sponsor

Contact

Phone 312-515-9490
Website www.CompassToCare.org/ChicagoBreakfast/
Email Michelle@CompassToCare.org
Address 6323 N Avondale Ave, Suite 250, Chicago, IL